

# HARRY HOPKINS CO.

## FOREST HILL SALE OR LEASE 2,000 TO 13,000 SQ. FT.

*2012 ROCK SPRING  
ROAD  
FOREST HILL,  
MARYLAND  
21050*

**TIM HOPKINS  
BROKER**

2845 CHURCHVILLE ROAD  
P.O. BOX 98  
CHURCHVILLE, MD 21028  
[WWW.HHCRE.COM](http://WWW.HHCRE.COM)

Phone: 410-879-7466  
Fax: 410-836-0827  
E-mail: [hhcre@comcast.net](mailto:hhcre@comcast.net)



13,000 SQUARE FOOT BUILDING

1.8 ACRE LOT

ZONED B2 BUILDING BUILT IN 2008

FIRST FLOOR UNFINISHED

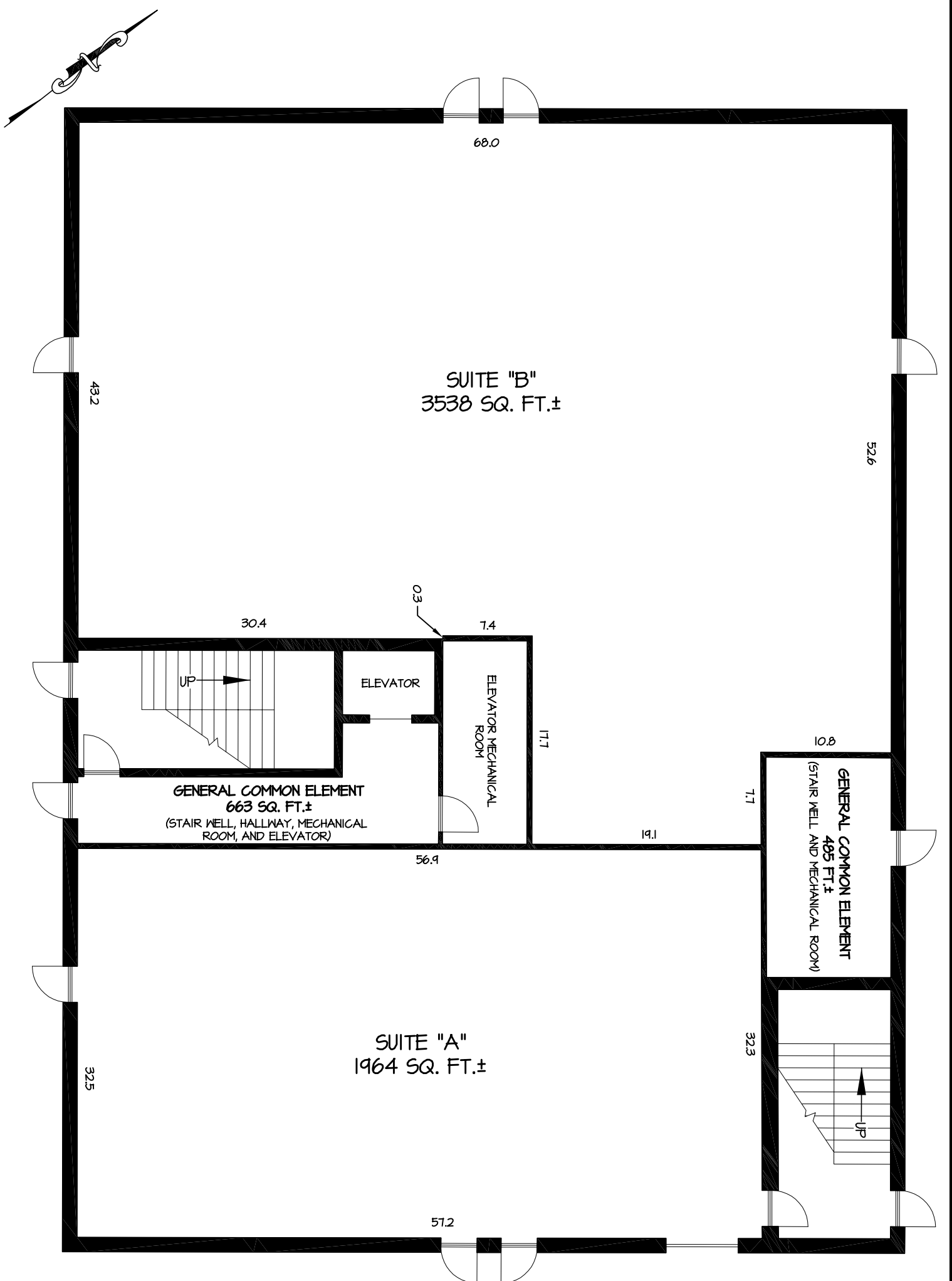
SECOND FLOOR PARTIALLY FINISHED

LOCATED BEHIND APG CREDIT UNION AND WAL GREENS

GREAT LOCATION ON ROUTE 24 WITH EASY ACCESS TO BEL AIR

PRICE: LEASE OR SALE ALL OR PART, CALL FOR DETAILS





**FIRST FLOOR**

PAGE 2 OF 3

**BAY STATE LAND SERVICES**  
 ENGINEERS \* SURVEYORS  
 LAND PLANNERS  
 ENVIRONMENTAL CONSULTANTS

P.O. BOX 853  
 BEL AIR, MARYLAND 21014-0853  
 PHONE: 410-879-4747-FAX: 410-420-3949

CONDOMINIUM LAYOUT  
**2012 PROFESSIONAL OFFICE BUILDING CONDOMINIUM**  
 THIRD ELECTION DISTRICT HARFORD COUNTY, MARYLAND

SCALE: 1"=10'	DATE: 12-1-10	DRAWN BY: JSC	JOB NO.: 03088
---------------	---------------	---------------	----------------

